

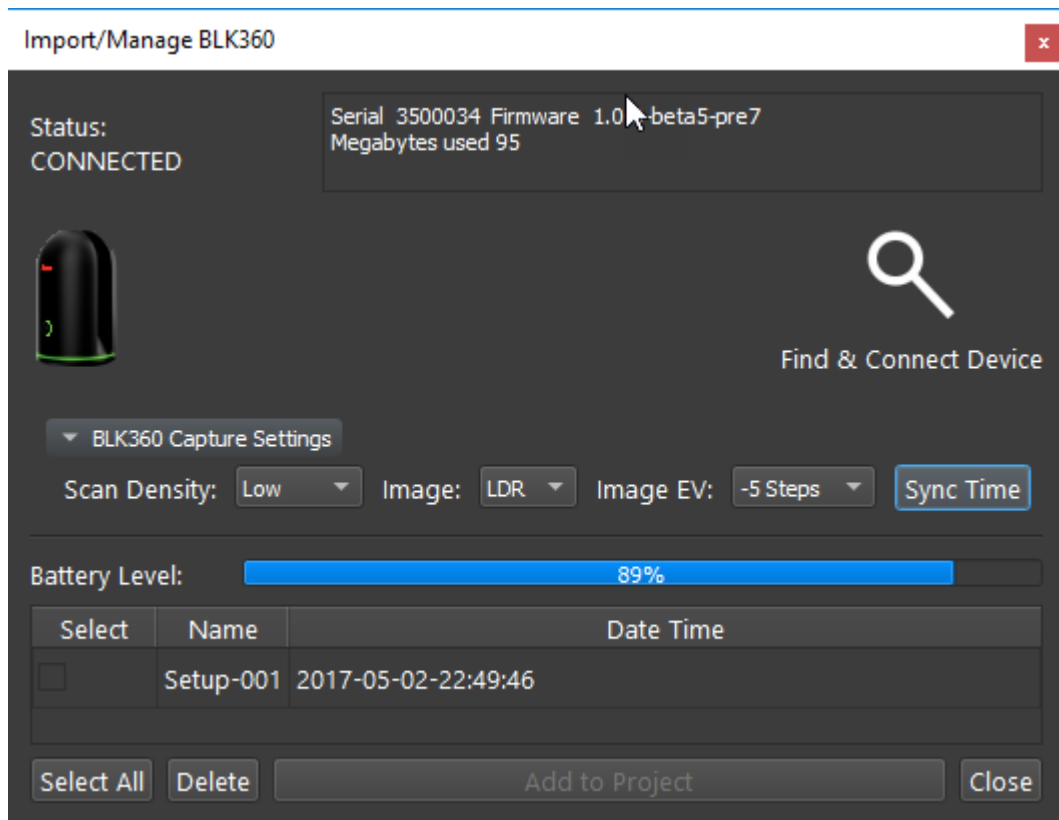
Leica Geosystems

QuickStart Guide: BLK360 Data Manager

Product Leica BLK360 Data Manager
From HDS Software Product Management

Contents

Introduction	2
Installation	2
Program usage	3
Changing the settings on the BLK360 imaging scanner	8
Suspend and Resume for the download process	8
Sync Time command.....	10



Introduction

The Leica BLK360 Data Manager program is a standalone program that allows the user to download Leica BLK360 imaging scanner data directly to the computer disk. In addition, the user can also change the capture settings such as the scan resolution, HDR or LDR image options, and image exposure.

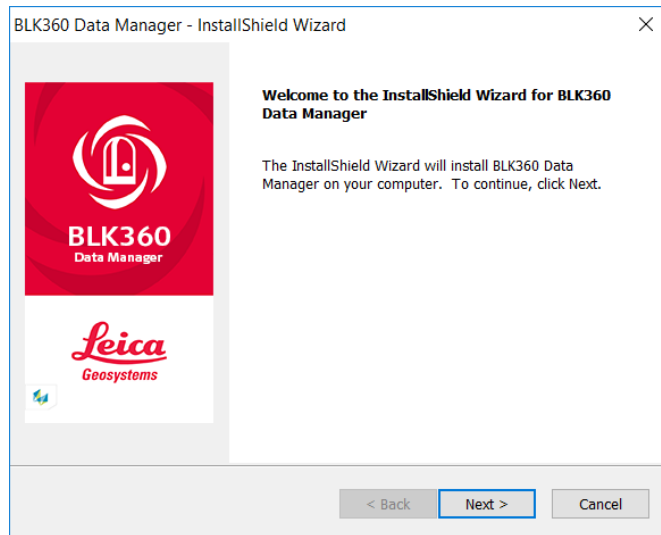
Once the data is downloaded, it can be imported into Cyclone REGISTER 360 1.4.1 or Cyclone 9.2.1 or higher.

No license is needed to run the BLK360 Data Manager.

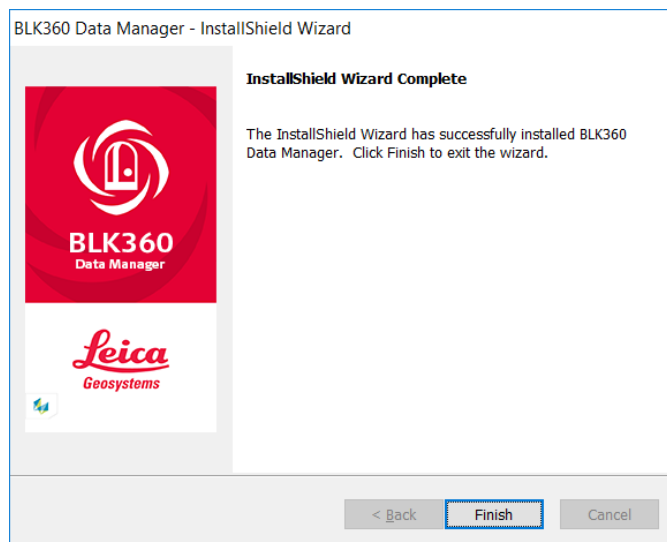
Please make sure you have the latest graphic card drivers installed from the manufacturer's website.

Installation

1. Click on the install file to start the installation process:

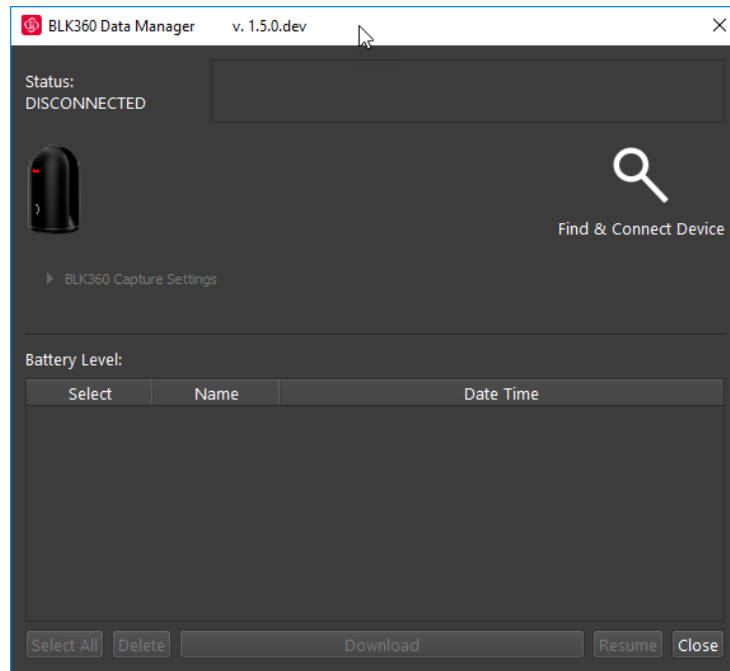


2. Click Next, accept the licening agreement to finish the process:

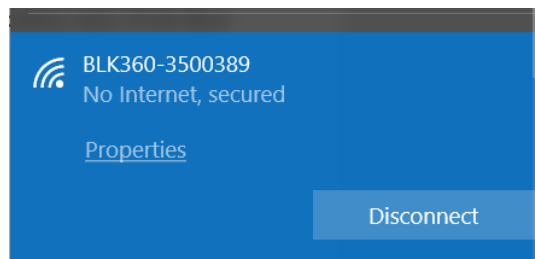


Program usage

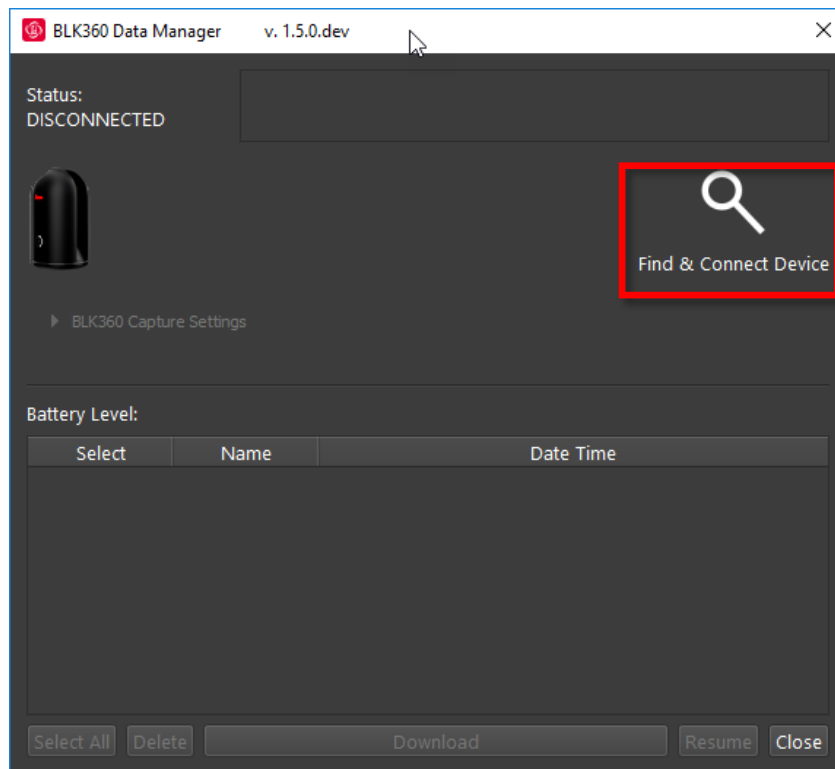
1. Click on the BLK360 Data Manger icon in the desktop to start the program:



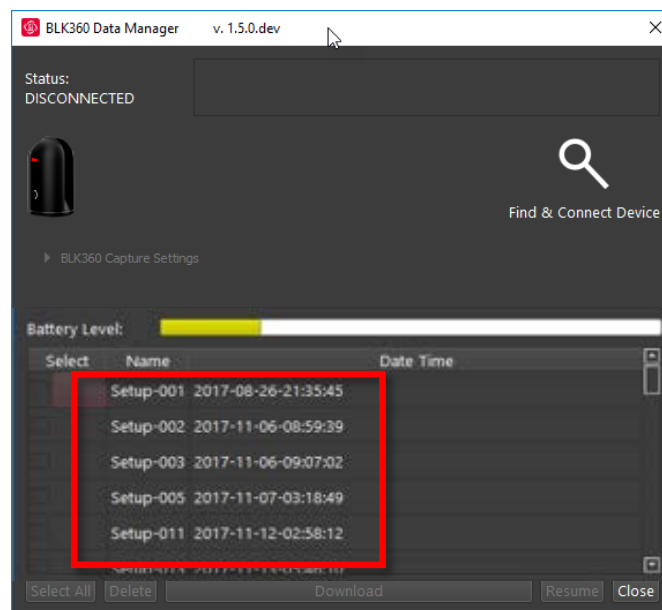
2. Connect your computer's WiFi to the BLK360 using the Windows wireless connection (Windows 10 is used in this example). The wireless password is located on the inside of the battery door of the BLK360 scanner. When entering the password ensure proper capitalization and inclusion of all dashes.



3. Click the Find & Connect Device button inside of the BLK360 Data Manager application:

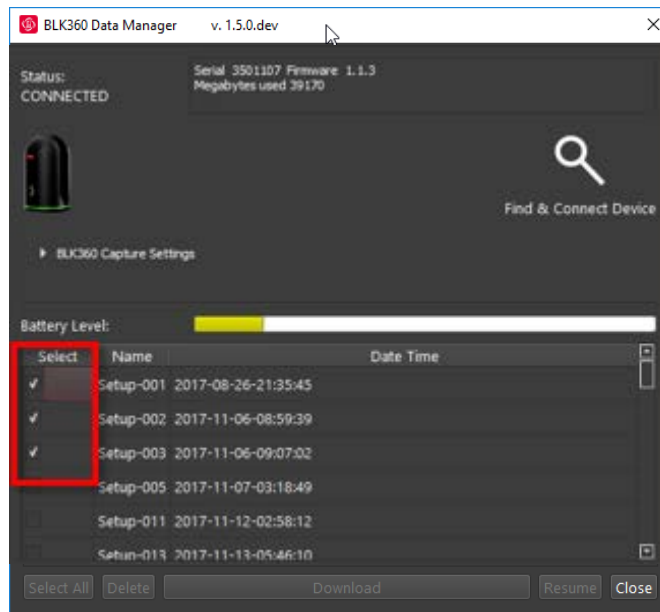


- Once connected, a list of scan setups is shown along with the Battery level, Serial number of the scanner, firmware version, memory used, and Capture settings.

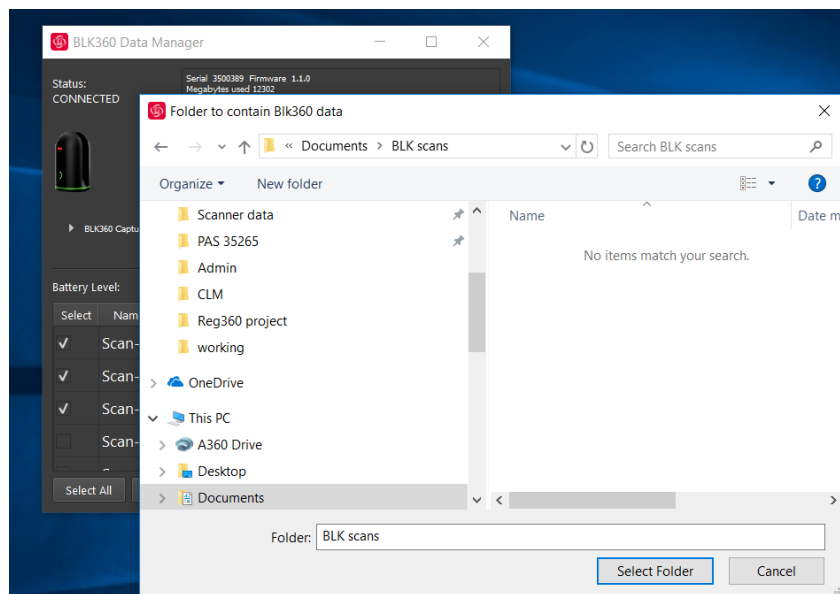


The BLK360 Data Manager will not initiate or continue a download with 15% battery life or less.

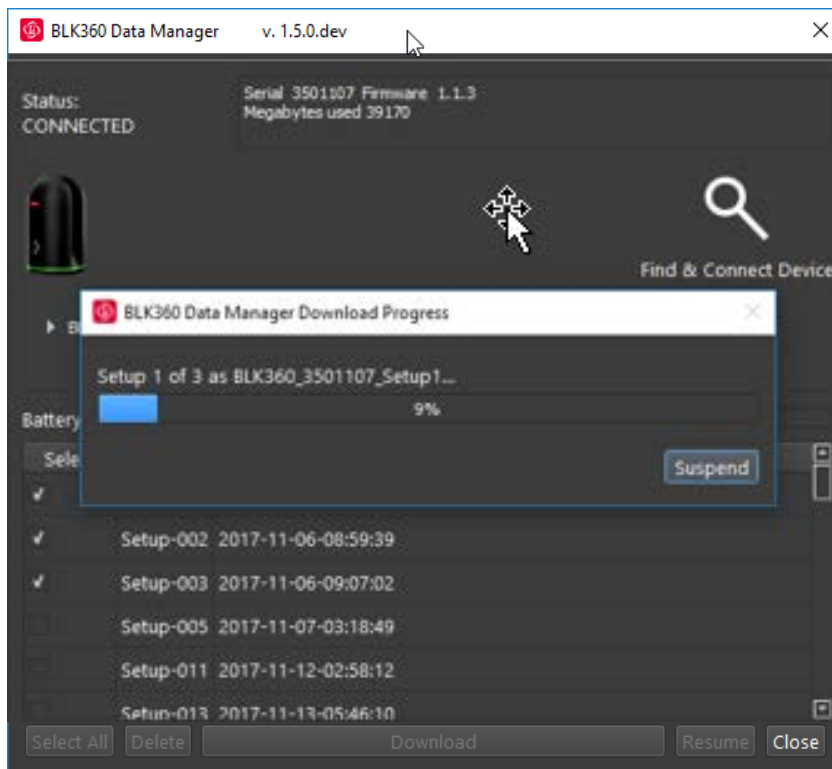
5. Select the setups to download by marking the check boxes next to each setup (you can multi-select setups by holding the shift key), then click download:



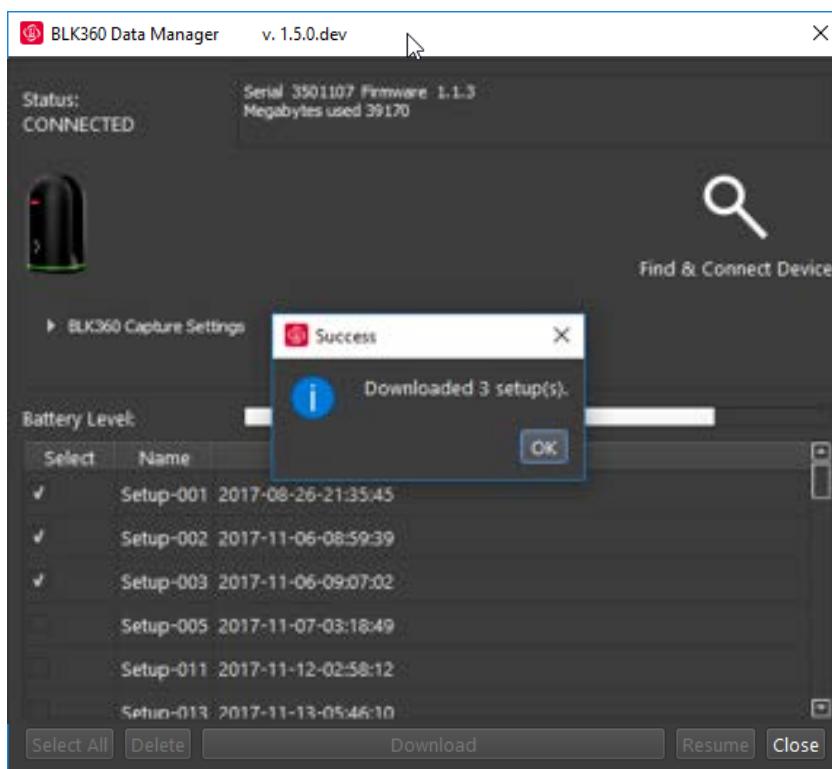
6. Select the destination folder for the BLK360 setup data:



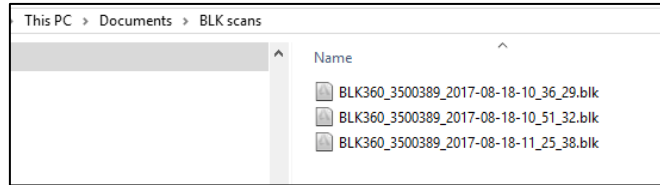
7. After clicking the Select Folder button the download will begin. A progress bar will appear:



8. When complete, a dialog will appear:



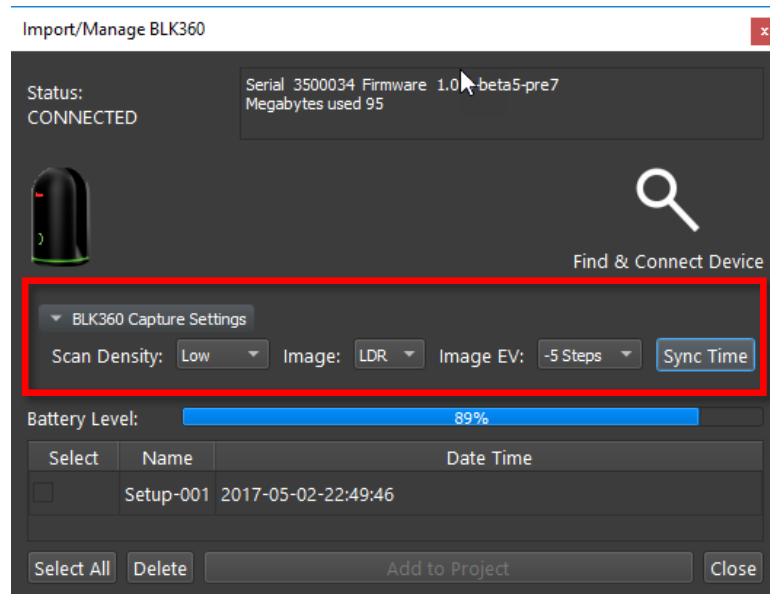
9. Browse to the folder and inspect the contents:



10. The BLK360 data files can be imported into Cyclone REGISTER 360 or Cyclone. The file type used is *.blk. Simply drag and drop the *.blk files into Cyclone REGISTER 360 or browse to the folder and select the scans. For Cyclone, use the Import command the browse to the selected folder containing the BLK360 files to import the data.

Changing the settings on the BLK360 imaging scanner

1. Capture settings can be changed in this section of the dialogue window. Use the pull downs to select scan density (high, medium, low), image quality (LDR or HDR) and Image exposue (EV-5 to +5).

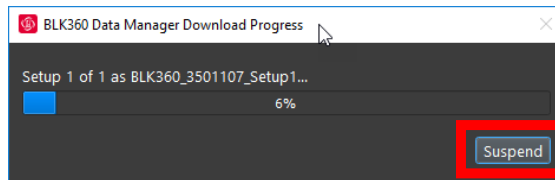


Once the settings are changed, they are applied to the BLK360 automatically.

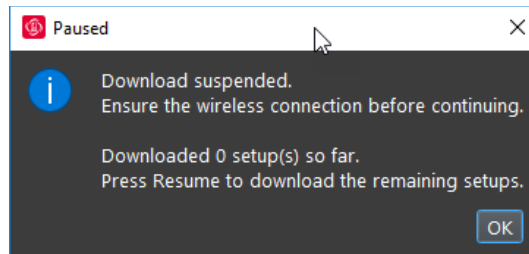
Suspend and Resume for the download process

During the download process a “Suspend” button is available to suspend the current download.

1. Click the “Suspend” button to suspend the download process.

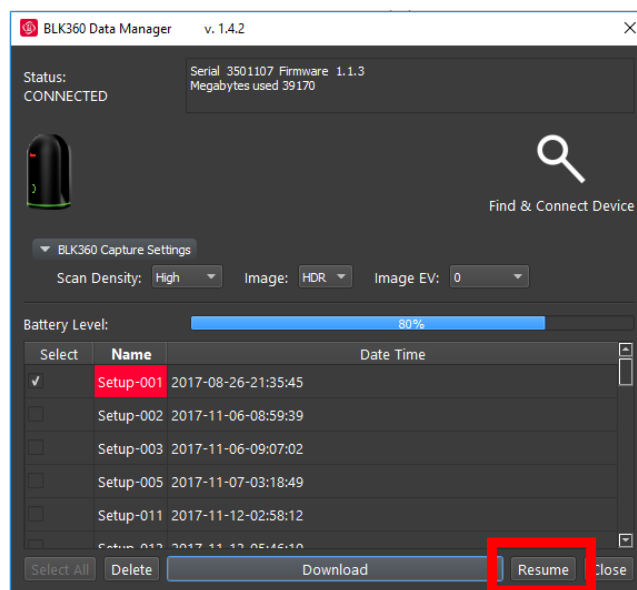


2. A dialog will appear when the download is successfully suspended.



This dialog may also appear if there are connection issues with the WiFi

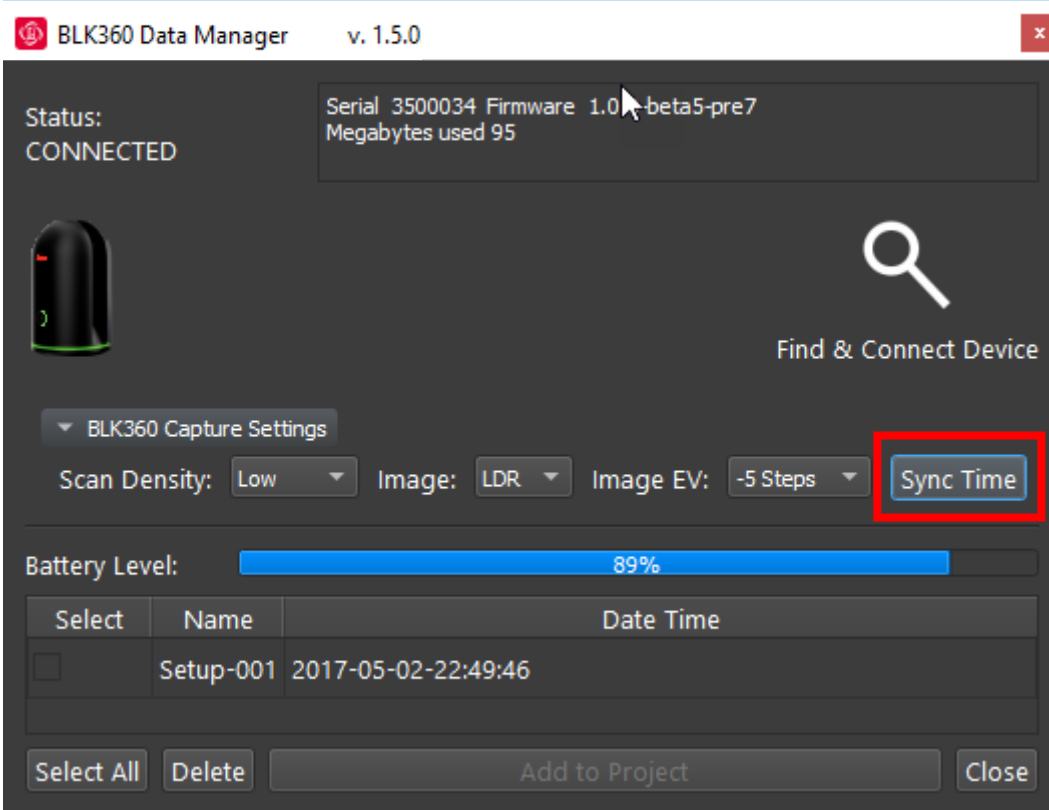
3. A dialog will appear informing the user to click the “Resume” button in the main dialog. Click “Resume” to continue the download.



Users may wish to utilize the “Suspend/Resume” function during long downloads to swap batteries. The BLK360 Data Manager will automatically suspend an in-progress download when the device reaches 15% battery life in order to preserve download progress. Once the battery has been replaced with a fully changed unit, the user must use their computer WiFi settings to reconnect to the BLK360 Data Manager then hit “Resume.” The download will pick up from the setup that was interrupted and continue until completion or 15% battery level is reached again.

Sync Time command

To sync the time of the BLK360 to the connected computer, click the Sync Time button in the Data Manager:



BLK360 Data Manager v. 1.5.0

Status: CONNECTED

Serial 3500034 Firmware 1.0-beta5-pre7
Megabytes used 95

Find & Connect Device

BLK360 Capture Settings

Scan Density: Low Image: LDR Image EV: -5 Steps **Sync Time**

Battery Level: 89%

Select	Name	Date Time
<input type="checkbox"/>	Setup-001	2017-05-02-22:49:46

Select All Delete Add to Project Close